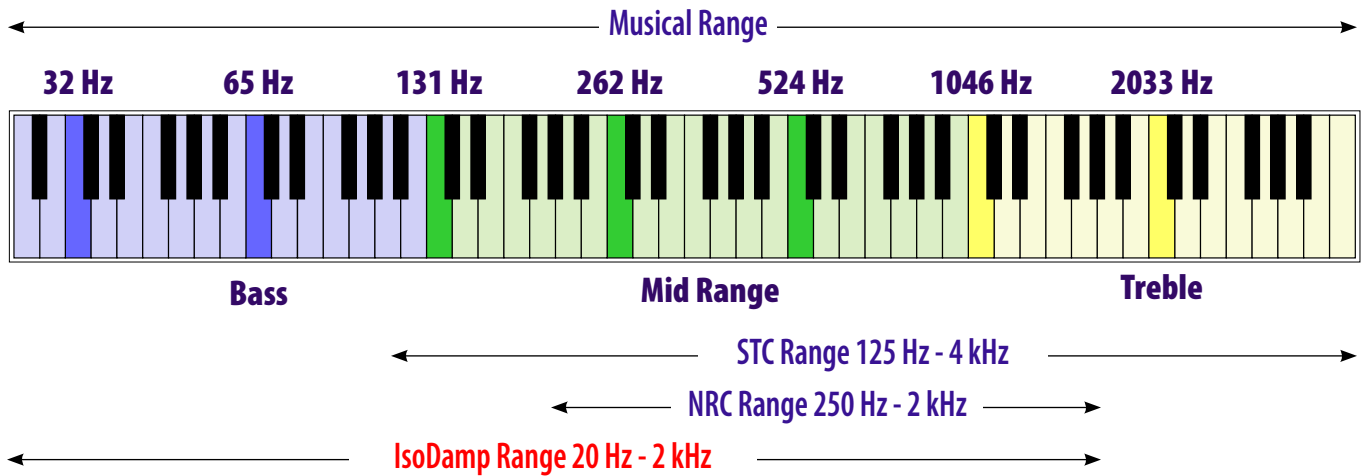


IsoDamp products can be installed in many configurations depending on your specific application and budget. Outlined below is a selection of possibilities and their relevant test numbers. Understand that lab tests do not represent real-world conditions and may

not translate to actual results. We urge you to plan your project carefully, ask questions, and try to strike a balance between budget and results. All the numbers below are based on a wood framed wall. Numbers for steel framing will be different.



IsoDamp Ultra

Basic Application
On typical stud wall

WALL WITHOUT ISO DAMP STC: 59
WALL WITH ISO DAMP STC: 62
FIRE RATING 2 HOURS

Enhanced Application
On typical staggered stud demising wall

WALL WITHOUT ISO DAMP STC: 62
WALL WITH ISO DAMP STC: 65
FIRE RATING 2 HOURS

Home Theater Application
On typical double stud demising wall

WALL WITHOUT ISO DAMP STC: 69
WALL WITH ISO DAMP STC: 71
FIRE RATING 2 HOURS

WallDamp Standard

Basic Application
On typical stud wall

WITHOUT WALL DAMP STC: 38
WALL WITH WALL DAMP STC: 41
FIRE RATING 2 HOURS

Enhanced Application
On typical staggered stud demising wall

WITHOUT WALL DAMP STC: 56
WALL WITH WALL DAMP STC: 59
FIRE RATING 2 HOURS

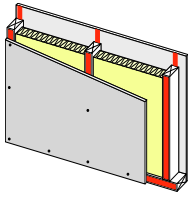
Home Theater Application
On typical double stud demising wall

WITHOUT WALL DAMP STC: 67
WALL WITH WALL DAMP STC: 70
FIRE RATING 2 HOURS

WallDamp Economy

Basic Application

On typical stud wall



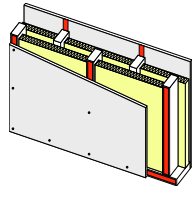
WITHOUT WALLDAMP
STC: 34

WALL WITH WALLDAMP
STC: 37

FIRE RATING
1 HOUR

Enhanced Application

On typical staggered stud demising wall



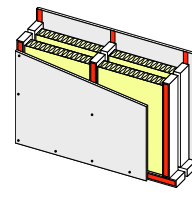
WITHOUT WALLDAMP
STC: 49

WALL WITH WALLDAMP
STC: 52

FIRE RATING
1 HOUR

Home Theater Application

On typical double stud demising wall



WITHOUT WALLDAMP
STC: 55

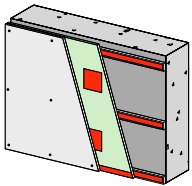
WALL WITH WALLDAMP
STC: 58

FIRE RATING
1 HOUR

WallDamp for Existing Walls

Concrete Application

On typical cement wall

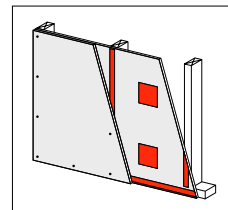


WITHOUT WALLDAMP
STC: 52

WALL WITH WALLDAMP
STC: 58

Existing Wall Application

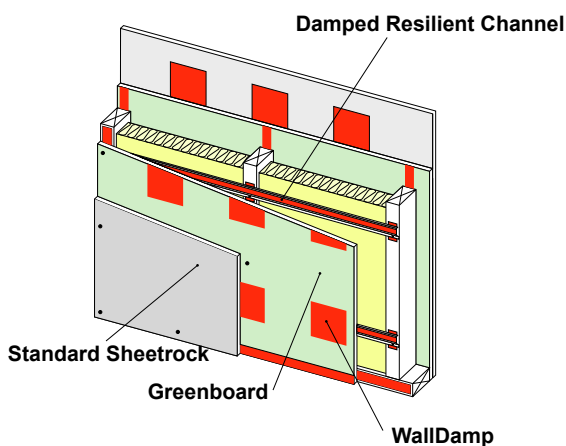
On typical existing sheetrock wall



WITHOUT WALLDAMP
STC: 34

WALL WITH WALLDAMP
STC: 43

IsoDamp Components at a Glance



WallWool Acoustic Enhancement



1" thick WallWool instead of fiberglass. For interior walls only.

Using WallWool instead of fiberglass can help decrease sound transmission while improving the acoustic properties of the room. While it's just 1" thick, WallWool (a high grade ceramic based mineral wool) is vastly superior soundproofing product. Sold unfaced by the square foot, or as faced batts.



4275 W. 5th Ave, Eugene, OR 97402

Phone: 1-800-ASC-TUBE (272-8823) • Tel: (541) 343-9727 • Fax: (541) 343-9245 Website: www.acousticssciences.com

Applied Acoustics for Home Theater & High End Audio • Research • Design • Product Development

REVISED 12-05